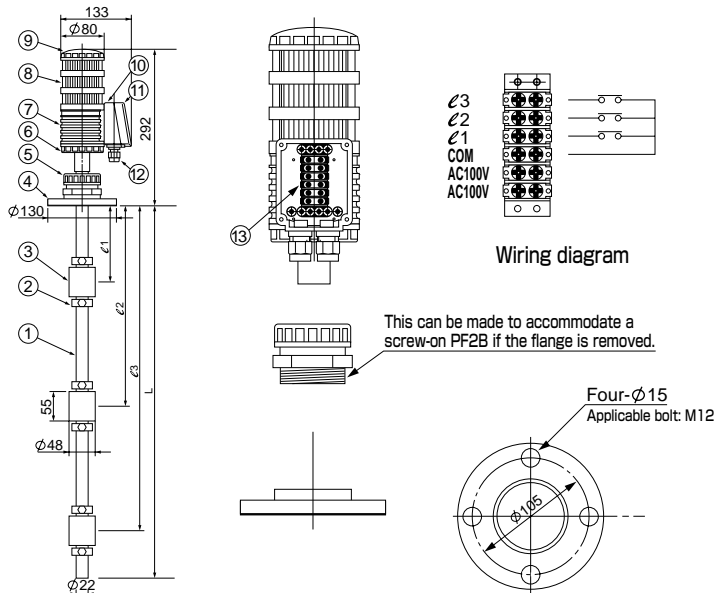
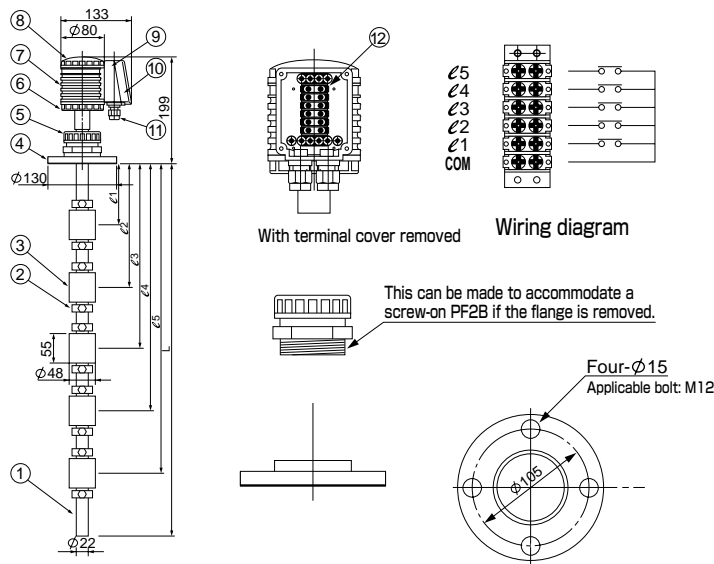


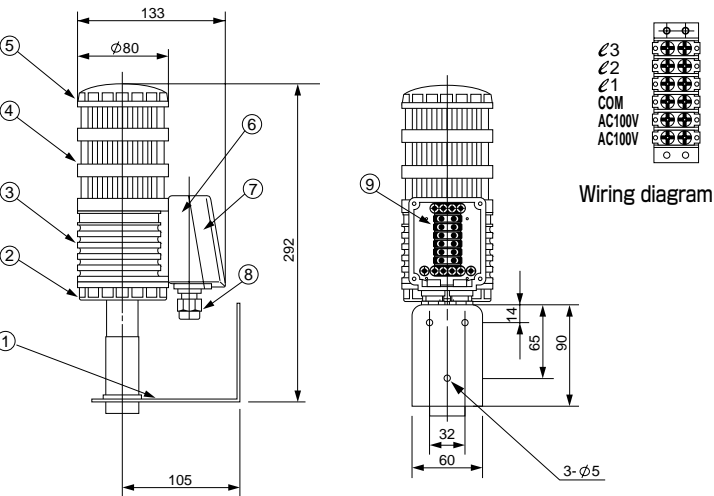
Model TL-101

Model TLK-200

Model TLK-200S



*Please specify which of L1- L5 you require when ordering. Make sure to set the gap dimension to at least 120mm.



Part number	Part name	Quantity	Material standard and other info
1	Stem	1	PVC
2	Stopper	2~10	PVC
3	Float	1~5	PP
4	Installation flange	1	AES JIS5K50A equivalent
5	Union	1	AES
6	Base	1	AES
7	Body	1	AES
8	Top cover	1	AES
9	Terminal box	1	AES
10	Terminal box cover	1	AES
11	Connector	2	PF 1/4 water-resistant plug
12	External connection terminal	1	6P (MAX)

Part number	Part name	Quantity	Material standard and other info
1	Stem	1	PVC
2	Stopper	2~6	PVC
3	Float	1~3	PP
4	Installation flange	1	AES JIS5K50A equivalent
5	Union	1	AES
6	Base	1	AES
7	Body	1	AES
8	Display lens	1~3	PMMA
9	Top cover	1	AES
10	Terminal box	1	AES
11	Terminal box cover	2	AES
12	Connector	2	PF 1/4 water-resistant plug
13	External connection terminal	1	6P

Part number	Part name	Quantity	Material standard and other info
1	Installation fixture	1	SUS304 t=3
2	Base	1	AES
3	Body	1	AES
4	Display lens	1~3	PMMA
5	Top cover	1	AES
6	Terminal box	1	AES
7	Terminal box cover	1	AES
8	Connector	2	PF 1/4 water-resistant plug
9	External connection terminal	1	6P

Note) Shown above are standard specifications.

●Specifications and external appearances may be modified without notice. ●Colors shown on this brochure may be different from that of actual products due to variations in printing conditions.

CEM corporation Co.,Ltd.

Head office : 1-10-25 Honkomagome, Bunkyo-ku, Tokyo 1138638 Phone:81-3-3946-3335 Fax:81-3-3946-0675
Overseas sales dept. : 1-10-25 Honkomagome, Bunkyo-ku, Tokyo 1138638 Phone:81-3-3946-3201 Fax:81-3-3946-3210
TAIWAN CEMCORPORATION : 3F, No.56, Sec.2, Jhongcheng Rd., Shilin District, Taipei 111, Taiwan Phone:886-2-2836-8603 Fax:886-2-2832-1148
SHANGHAI CEMCORPORATION : 206 Floor A, 288 Yu Yao Lu Jingan Qu, Shanghai Shi Phone:86-21-6231-7631 Fax:86-21-6230-9736

Inquiries

CEMCO LEVEL SENSOR

Model TL-101

Model TLK-200

Model TLK-200S



The CEMCO level sensor is made entirely of resin. It delivers excellent corrosion resistance, is constructed for easy installation, can be delivered in short lead times, is low-cost, and also comes with an integrated signal lamp, which is an industry first. This sensor can be used in a variety of applications for liquid volume and level management in chemical industries and a variety of other industrial processes. A wide range of options is also available. We look forward to serving your needs.

Features

- Terminal box is made of AES which offers excellent weather resistance.
- Union-type attachment flange is movable (JIS5K50A standard)
※PF2B screw is available after flange is removed.
- Comes standard with shock-resistant HIPVC stem.
- Low cost and short delivery times
- Manage liquid volumes easily by lamp color (Model TLK-200 and Model TLK-200S)
- Detached model for remote management (Model TL-101 + Model TLK200S)

Options

- Models with built-in power relay driven directly by the pump
- Models with built-in alarm buzzer
- Other

Applications

- Liquid level management in chemical industries
- Liquid level control in unit devices
- Liquid level management in production lines
- Liquid volume management for ingredients in food processing
- Liquid level control and chemical liquid volume management in waste water treatment, and other processes.
- Various other liquid volume and level management applications



■Control panel (option)
Available in different designs to meet different specifications such as for controlling pump liquid levels using the level sensor.



■For managing liquid volumes in food ingredient tanks
Useful for managing ingredient ordering timing, and preventing accidents such as over-injection from tank trucks.



■Best choice for implementing "full" alarms on chemical turbid water tanks in waster water treatment and other processes.
This is the best choice for corrosive chemicals as it is made entirely of resin.
※We also have a range of tank mixers.



■Model TL-101
Compact outdoor terminal box



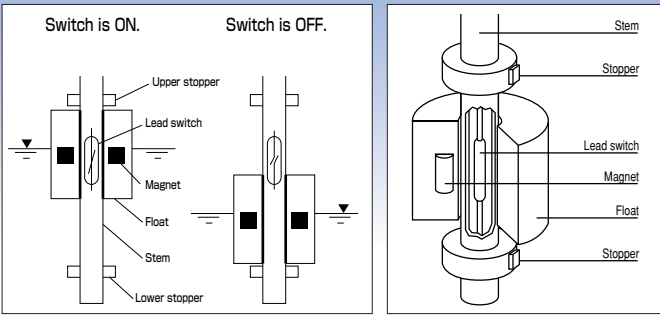
■Model TLK-200
Integrated model for on-site management



■Model TLK-200S
Detached model for remote management from offices, etc.

Principle

■To detect the liquid level, this float switch level sensor uses a combination of a magnet and a lead switch, which is a magnetically activated switch, where the magnet is incorporated in the float and the lead switch is attached inside the stem at the detection level. The lead switch is triggered on or off as the float moves up and down as liquid levels change.



Choosing TL-101 models

TL-101	—	□	P	—	□	—	□	—	□
		①			②		③		④
①: Number of contacts	②: Length	③: Operating temperature	④: Installation						
1~5	1: 1m≧ 2: 2m≧ 3: 3m≧ 4: 4m≧	V: 0~50℃ H: 0~80℃	1: JIS5K50A flange 2: Special order flange						

Choosing TL-200 and TLK-200S models

TLK-200	—	□	P	—	□	—	□	—	□	—	□
		①			②		③		④		⑤
①: Number of contacts	②: Length	③: Operating temperature	④: Installation	⑤: Number of display columns	⑥: Display colors						
1~3	1: 1m≧ 2: 2m≧ 3: 3m≧ 4: 4m≧	V: 0~50℃ H: 0~80℃	1: JIS5K50A flange 2: Special order flange	1: One 2: Two 3: Three	G: Green Y: Yellow R: Red						
TLK-200S	—	□	—	□	—	□	—	□	—	□	—
		①				②					
①: Number of display columns	②: Display colors										
1: One 2: Two 3: Three	G: Green Y: Yellow R: Red										

Model TL-101 specifications

Name	Model	TL-101V	TL-101H
Terminal box	Material	AES	
	Construction	Water-resistant	
	Electrical lead inlet	PF 1/4 water-resistant plug	
Installation	Dimensions	JIS5K50A flange	
		PF2B	※1
	Material	AES	
Float	Dimensions	φ 48×55H	
	Material	PP	
	Specific gravity	≥0.7	
	Viscosity (CP)	500	
	Outer diameter	φ 22	
Stem	Material	HI PVC	HT PVC
	L dimension (Max)	3950mm	
	Maximum contact capacity	AC 10VA	DC 10VA
Electrical ratings	Maximum operating current	AC 1.0A	DC 1.0A
	Maximum operating voltage	AC 100V	DC 200V
	Maximum number of detection points	5	
	Service temperature range (℃)	0~50	0~80
	Defined interval dimension (MIN)	120mm	
Other			

Model TLK-200 and TLK-200S specifications

Name	Model	TLK-200V	TLK-200H	TLK-200S
Terminal box	Material	AES/acrylic		
	Construction	Water-resistant		
	Electrical lead inlet	PF 1/4 water-resistant plug		
Installation	Dimensions	JIS5K50A flange	Wall-hanging (SU304)	
		PF2B	※1	
	Material	AES		※2
Float	Dimensions	φ 48×55H		※2
	Material	PP		※2
	Specific gravity	≥0.7		※2
	Viscosity (CP)	500		※2
	Outer diameter	φ 22		※2
Stem	Material	HI PVC	HT PVC	※2
	L dimension (Max)	3950mm		※2
	Contact capacity	200VAC/3A (resistance load)		※2
Electrical ratings	Power supply voltage	AC100V		
	Power consumption	1.5W (MAX)		
	Display method	Ultra-high luminance LED		
	Maximum number of detection points	3		
	Max number of output contact	3		
Other	Max number of lamps	3		
	Service temperature range (℃)	0~50	0~80	※2
	Defined interval dimension	120mm		

※1 The PF2B can be screwed on if the flange is removed.
※2 This is in combination with model TL-101 because it is a detached model.
[Reminders]
1.The short pipe with flange that the tank manufacturer (JIS5K50A) includes cannot be used as its inner diameter is 46mm.
2.Optional attachment flanges can be fabricated for various sizes, but please note that they can only be made in PVC.
3.This unit cannot be used for high-concentration slurries or under freezing conditions.